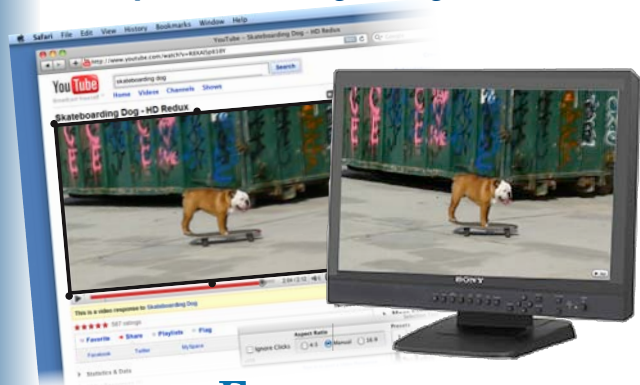


## BrightEye *Mitto*<sup>TM</sup> 3G / HD / SD Scan Converter



*Superior Quality, Easy-To-Use*



**ENSEMBLE**  
DESIGNS

## You opened the box and...

Inside you found:

- Your Mitto
- One USB cable
- Two VGA to DVI adaptors
- The BrightEye software and user manual CD

You will need the following:

- Power — 12 volts, 12 watts (100-230 VAC modular power supply, order separately)
- Desktop computer with monitor (optional) or a laptop computer (PC or MAC)
- Additional cables as required by your studio configuration

## Now, follow these easy steps

# 1. Install the Software

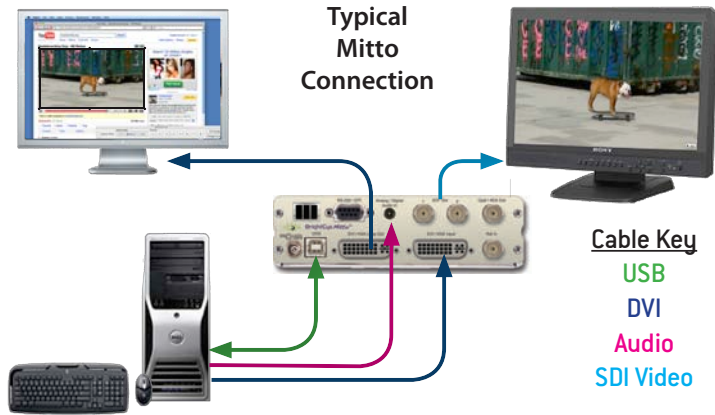
The BrightEye Mac/PC software is included on CD, v2.0 or later is required.

Insert the CD into your computer and follow the prompts.

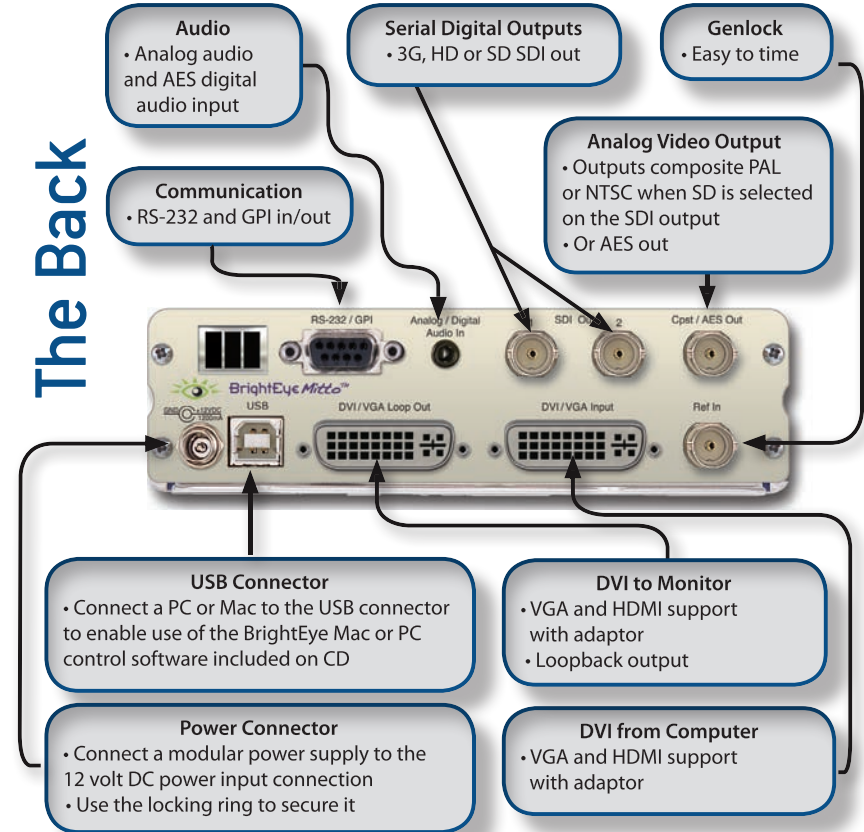
Or get the latest version at <http://brighteyemitto.com>

## 2. Connect the Mitto

- Start with your computer and monitor turned off.
- Connect a USB cable from your PC or Mac computer to the Mitto.
- Connect the Mitto's DVI/VGA Loop Out connector to the computer monitor's input.
- Connect the computer's monitor output to the Mitto DVI/VGA Input connector.
- Connect the Mitto's SDI Out or Composite Out BNC to a video monitor or destination.
- If using audio, connect the computer's audio output to the Mitto's Audio In.
- If desired, connect your reference signal to the Ref In. Mitto's output is genlocked and fully timeable to this reference.
- Connect power to the Mitto.
- Turn on the computer and monitors.



## The Back



# 3. Configure the Mitto

## Select a Resolution

Set the resolution of your computer monitor. For the best video output from BrightEye Mitto, select the highest available resolution on the computer monitor. For HD applications 1920 x 1200 is preferred.

## Select Video Format

From the BrightEye Mac or PC software or the Mitto's front panel, configure the desired output format from the Output menu. Select the Standard (NTSC or PAL), Mode (SD, HD, 3G), and HD format if using HD.

Then select the appropriate aspect ratio: 16:9, 4:3 or manual mode.

## Alternate ways to Mitto!

There are other ways to use BrightEye Mitto in your TV station or video facility.

- It can be used with a laptop.
- It can be used without a computer monitor.
- It can be used with or without the Mitto software.
- It can be controlled from the Mitto panel control buttons only.

For more information, see the BrightEye Mitto User Manual at <http://brihteyemitto.com>

# Front Panel Control Buttons

## Arrow and Button Selection

Prev and Next navigate through the various controls, such as Aspect and Position. When a control is selected its LED blinks on and off. Arrows change values for the control you selected.

## Position

The Position and Size controls let you select exactly what part of the computer image you want to output to video. When the Position LED is blinking, adjust the position of the upper left corner of the selection. Use the four arrows to control position. Press and hold for faster movement.

*Short cut:* Press and hold left and right arrows at the same time to reset the H position to default values. Press and hold up and down to reset V position.

## Size

When the Size LED is blinking, adjust the position of the lower right corner of the selection. Use the four arrows to control size.

*Short cut:* Press and hold up and down (or right and left) arrows at the same time to reset to maximum possible size.

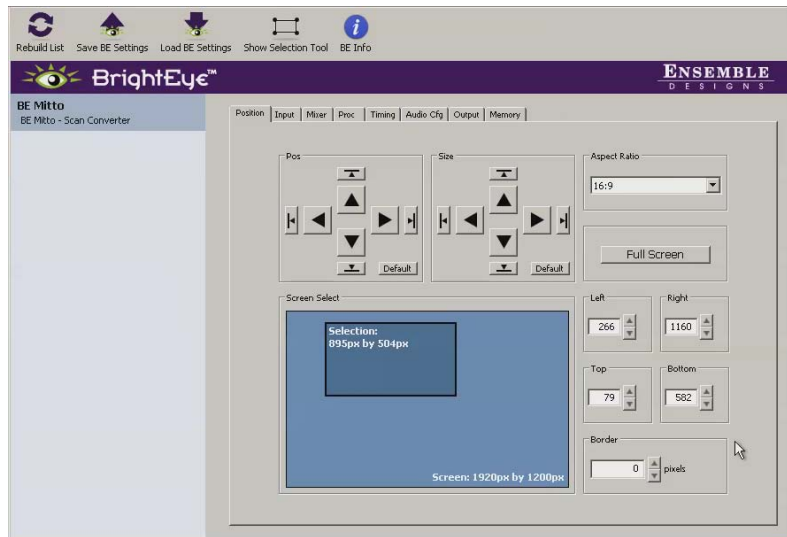
## Full Screen

With Position or Size LED blinking, press and hold the up, left and right arrows at the same time to go to full screen.



# Software Control

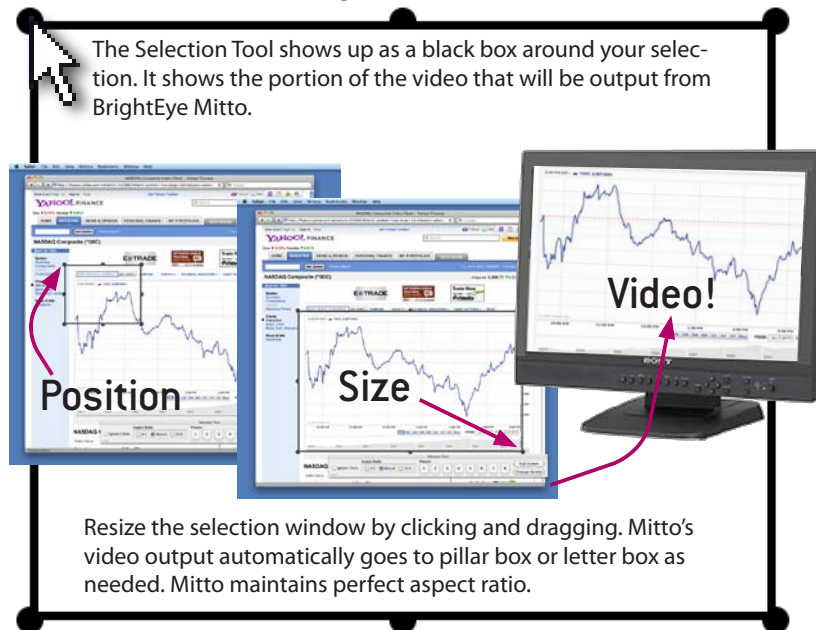
BrightEye PC and BrightEye Mac software provide complete and intuitive control of the BrightEye Mitto including handles for timing, video format, and video level adjustments.



Click the  Selection Tool button in BrightEye Mac or PC to bring up the Selection Tool.

# Video Selection Tool

Click and drag to move and resize selection



The Selection Tool shows up as a black box around your selection. It shows the portion of the video that will be output from BrightEye Mitto.

Resize the selection window by clicking and dragging. Mitto's video output automatically goes to pillar box or letter box as needed. Mitto maintains perfect aspect ratio.

[www.ensembledesigns.com](http://www.ensembledesigns.com)

+1 530.478.1830